

Figures



Figure 1: Point Breeze on the Delaware, Thomas Birch, 1818. Courtesy of the Newark Museum.



Figure 2: Students excavating at Point Breeze. Courtesy of the Asbury Park Press.



Figure 3. Lithograph “Map of the Residence and Park Grounds, Bordentown, New Jersey, Joseph Napoleon Bonaparte” (Miller 1844). Courtesy of the Library of Congress.

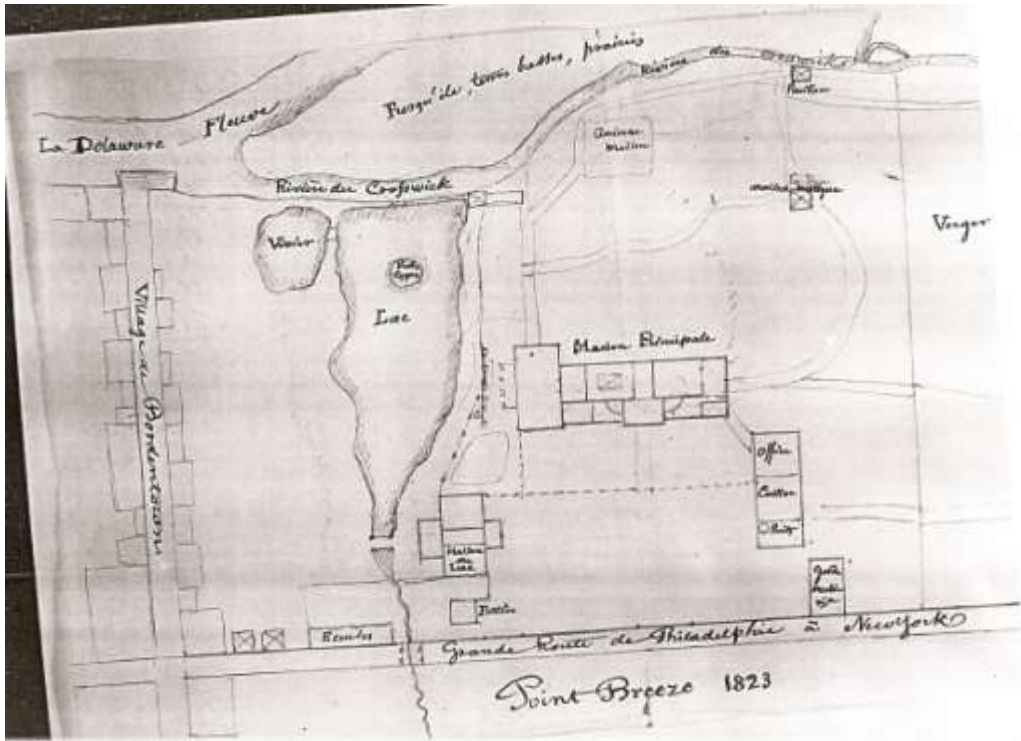


Figure 4. Anonymous map of the Point Breeze estate. Courtesy of the Municipal Archives of Versailles.



Figure 5. A French earthenware plate with a fine transfer print